



US00D425148S

United States Patent [19]

[11] Patent Number: **Des. 425,148**

Feltham et al.

[45] Date of Patent: **** May 16, 2000**

[54] **SMALL STUFFED ANIMAL WITH IDENTIFYING PASSPORT BOOKLET**

Primary Examiner—Sandra L. Morris
Attorney, Agent, or Firm—Michael F. Hughes; Hughes & Schacht, P.S.

[76] Inventors: **Sarah Feltham; Gary Feltham**, both of 10 Seafarer La., Port Ludlow, Wash. 98365

[57] **CLAIM**

[**] Term: **14 Years**

The ornamental design for a small stuffed animal with identifying passport booklet, as shown and described.

[21] Appl. No.: **29/087,133**

DESCRIPTION

[22] Filed: **Apr. 27, 1998**

FIG. 1 is a front view of the small stuffed animal with identifying passport booklet;

[51] **LOC (7) Cl.** **21-01**

FIG. 2 is a side elevational view of the animal and the passport booklet taken from a location to the right of FIG. 1;

[52] **U.S. Cl.** **D21/604; D21/585**

[58] **Field of Search** D21/576, 577, D21/585, 587, 595, 596, 604, 605, 611-613; D3/201; D19/26; 446/72-74, 97, 153, 226, 268, 296, 369; 283/34, 112

FIG. 3 is a side elevational view of the animal taken from a location at the left of the animal, as shown in FIG. 1;

FIG. 4 is a rear view of the animal and the passport booklet;

FIG. 5 is a top view thereof;

FIG. 6 is a bottom view thereof;

FIG. 7 is a front elevational view of the second page of the passport booklet, shown broken away for ease of illustration;

FIG. 8 is a front elevational view of a third page of the passport booklet;

FIG. 9 is a top view of the open passport book as shown in FIG. 8;

FIG. 10 is a side elevational view of the passport booklet of FIG. 9; and,

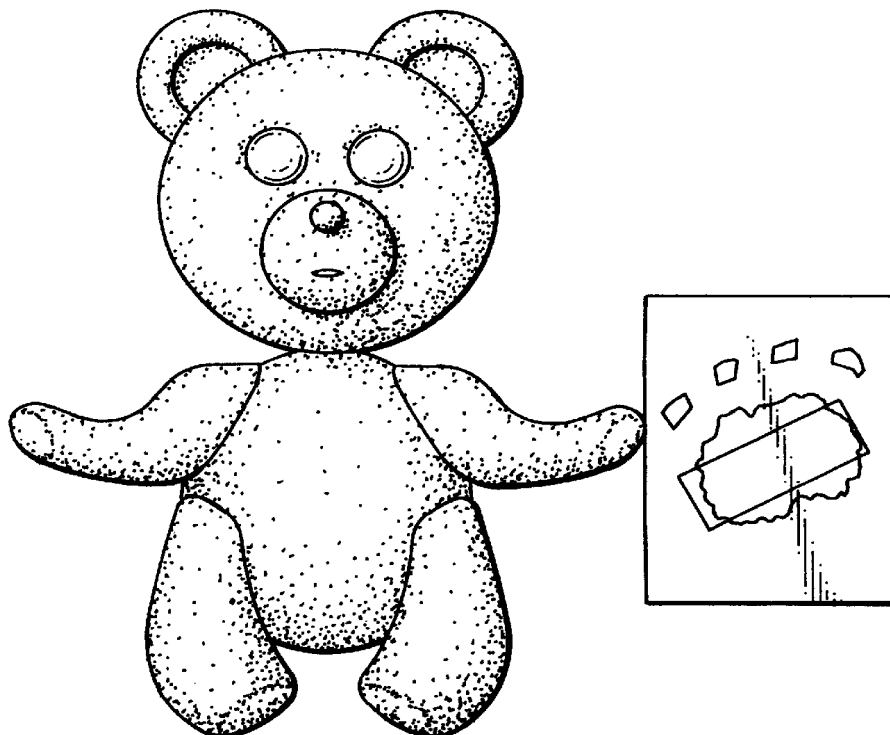
FIG. 11 is a bottom view of the passport book as shown in FIG. 8.

[56] References Cited

U.S. PATENT DOCUMENTS

D. 137,949	5/1944	Harpignies	D21/604
D. 170,083	7/1953	Gelardin	D21/585
D. 269,024	5/1983	Hoerlein	D21/604
D. 289,910	5/1987	Brightwell	D21/159
D. 302,712	8/1989	Henn et al.	D21/604
D. 322,299	12/1991	Evans	D21/159
1,108,159	8/1914	Ewing	283/34
3,699,703	10/1972	Biecker	446/72
4,911,478	3/1990	Oshikoshi et al.	283/109
4,921,459	5/1990	Cook et al.	446/321
5,211,424	5/1993	Bliss	281/112
5,746,637	5/1998	Hunt	446/72

1 Claim, 4 Drawing Sheets



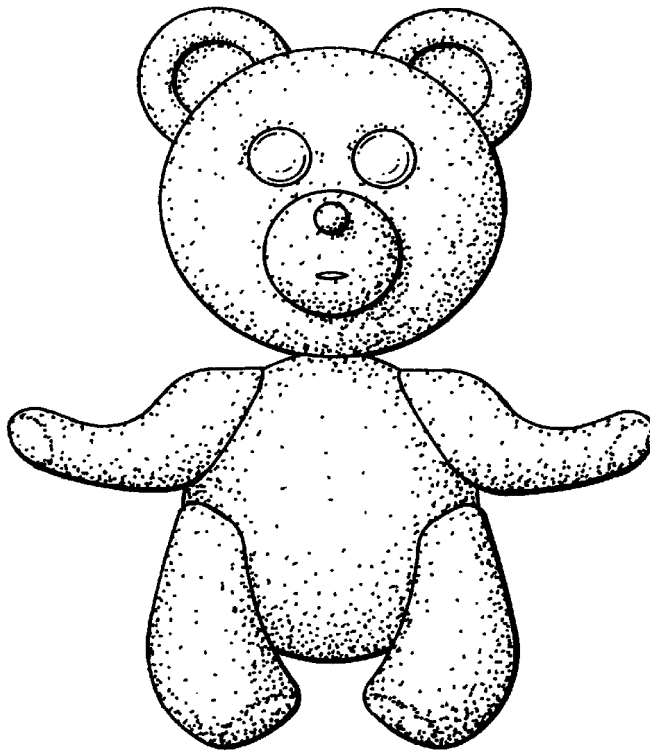


FIG. 1

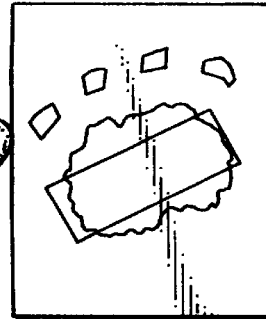


FIG. 2

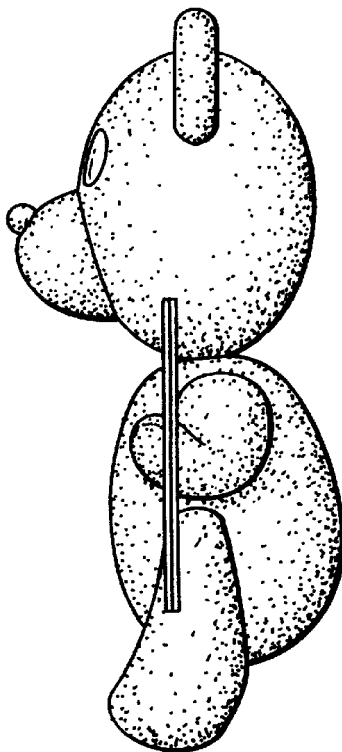


FIG. 3

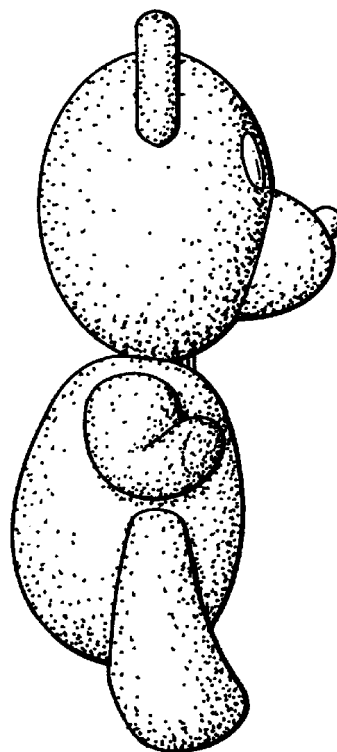


FIG. 4

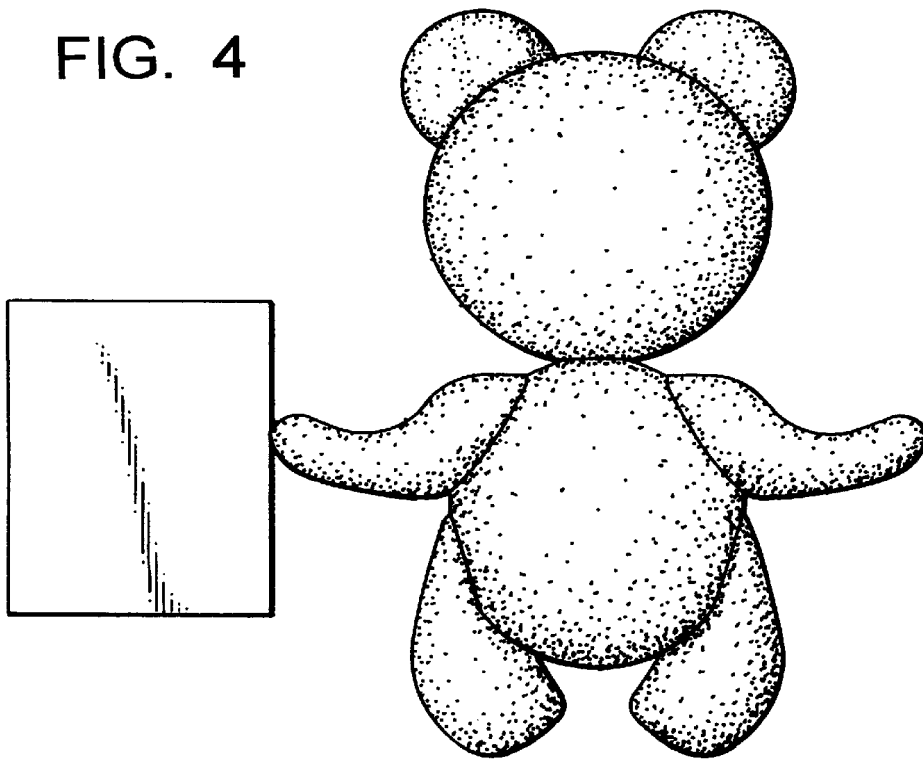


FIG. 5

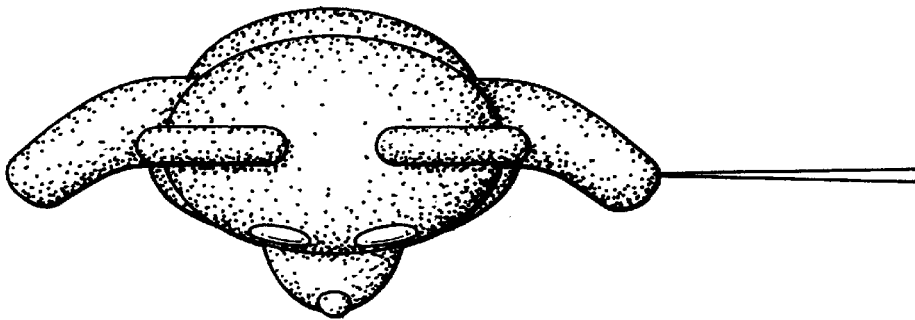


FIG. 6

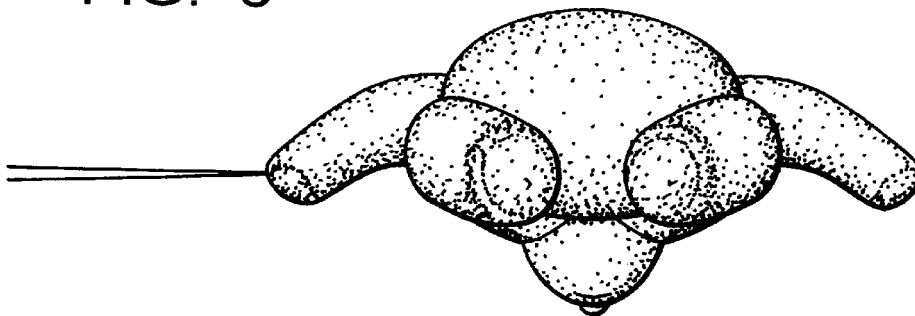


FIG. 7

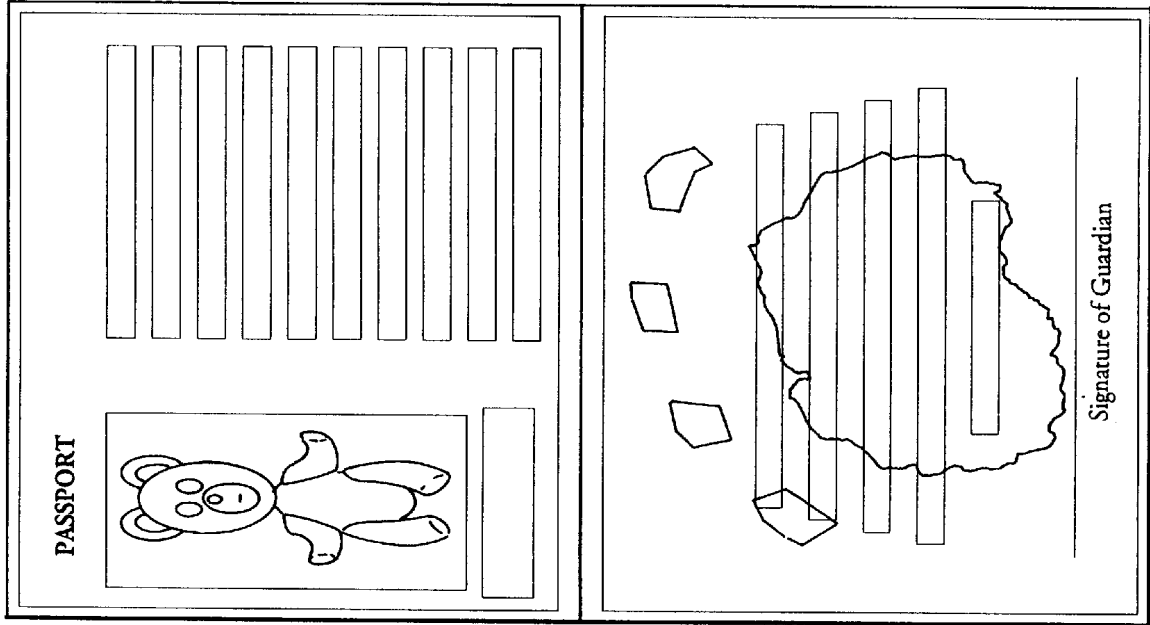


FIG. 8

